

Series A Rectangular Tanks

A range of rotationally moulded tanks suitable for water and waste. These tanks are now being used by most of the leading British manufacturers. Originally designed as marine tanks, they have been moulded in virgin grade Linear Medium Density Polyethylene resin, which is natural in colour.

The resin has a long term UV package and is suitable for use in or out of direct sunlight.

These tanks have been moulded to our specification, with a wall thickness of 9mm for tanks over 35 gallons. This extra thickness will combat any odour problems sometimes associated with cheaper thinner walled tanks when used in waste holding tank applications. Because the tanks are bare we can place fittings to customers requirements using our advanced heat fusion technology.

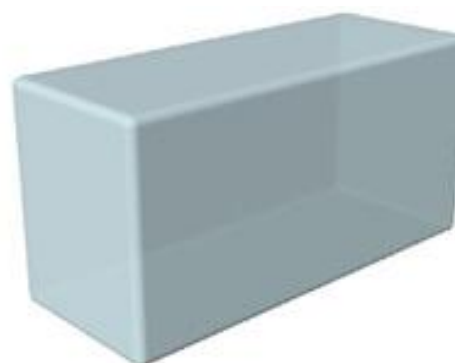
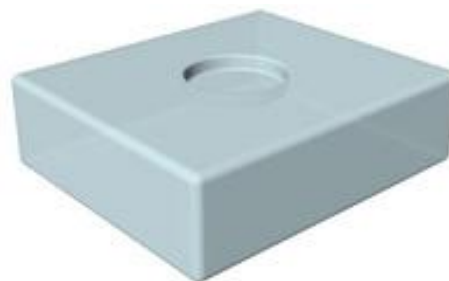
TANKS

| Part No. | L | W | H | Litres |
|-----------|------|-----|-----|--------|
| 50-30-25 | 500 | 300 | 250 | 35 |
| 60-40-25 | 600 | 400 | 250 | 60 |
| 40-40-40 | 400 | 400 | 400 | 64 |
| 83-35-24 | 830 | 350 | 240 | 70 |
| 60-38-38 | 600 | 380 | 380 | 85 |
| 85-40-32 | 850 | 400 | 320 | 90 |
| 76-51-31 | 760 | 510 | 310 | 100 |
| 83-35-24 | 830 | 350 | 240 | 58 |
| 83-53-24 | 830 | 530 | 240 | 105 |
| 85-40-42 | 850 | 400 | 420 | 120 |
| 85-40-32 | 850 | 400 | 320 | 90 |
| 83-71-24 | 830 | 710 | 240 | 140 |
| 83-71-24* | 830 | 710 | 240 | 140 |
| 102-41-51 | 1020 | 410 | 510 | 210 |
| 127-41-41 | 1270 | 410 | 410 | 210 |
| 175-50-33 | 1750 | 500 | 330 | 258 |

* 5mm wall thickness and black in colour.

FITTINGS

| Part No. | Description |
|----------|-------------------------------|
| TCL4 | TCL4 10" Inspection Hatch |
| FLB | Wema 6" Inspection Hatch |
| S13P | 1/2" Straight Hose Tail |
| S19P | 3/4" Straight Hose Tail |
| S25P | 1" Straight Hose Tail |
| S38P | 1 1/2" Straight Hose Tail |
| E13P | 1/2" 90° Elbow Hose Tail |
| E19P | 3/4" 90° Elbow Hose Tail |
| E25P | 1" 90° Elbow Hose Tail |
| E38P | 1 1/2" 90° Elbow Hose Tail |
| PDP1-16 | 1/2" Dip Pipe (Water Tanks) |
| PDP1-50 | 1 1/2" Dip Pipe (Waste Tanks) |



TEK TANKS

The Old Stables, West End Farm, Upper Froyle, Alton, Hampshire GU34 4JR. England
 Tel: +44 (0)1420 520830 fax: +44 (0)1420 520840 email: sales@tek-tanks.com
 www.tek-tanks.com

TEK TANKS

Water Waste and Fuel