

Tek-Tanks Standard Range of Tank Fittings

Over the next few pages, you'll see a comprehensive list of our standard tank fittings, that can be used with either our Custom Built or Standard Series A Tanks. Should you find that there is something you require which isn't listed, please get in touch and we will be happy to quote this for you.

Straight Plastic Hosetail Assemblies

For use with Water, Waste and Grey Water Tanks. These fittings can be situated on any tank face. If required, Plastic Dip-Pipes can be fitted for feed applications.



S13P

S16P

S20P

S25P

S38P

S50P

Code	Size (metric)	Size (imperial)	Height	Application
S13P	13mm	1/2"	64mm	Water, Grey Water
S16P	16mm	5/8"	64mm	Water, Grey Water
S20P	20mm	3/4"	68mm	Water, Grey Water
S25P	25mm	1"	74mm	Water, Grey Water, Waste
S38P	38mm	1 1/2"	92mm	Water, Grey Water, Waste
S50P	50mm	2"	100mm	Water, Grey Water, Waste

Elbow Plastic Hosetail Assemblies

For use with Water, Waste and Grey Water Tanks. These fittings can be situated on any tank face. If required, Plastic Dip-Pipes can be fitted for feed applications.



E13P

E16P

E20P

E25P

E38P

E38PR

E50P

Code	Size (metric)	Size (imperial)	Height	Application
E13P	13mm	1/2"	60mm	Water, Grey Water
E16P	16mm	5/8"	62mm	Water, Grey Water
E20P	20mm	3/4"	70mm	Water, Grey Water
E25P	25mm	1"	74mm	Water, Grey Water, Waste
E38P	38mm	1 1/2"	108mm	Water, Grey Water, Waste
E38PR	38mm	1 1/2"	85mm	Water, Grey Water, Waste
E50P	50mm	2"	110mm	Water, Grey Water, Waste

TEK TANKS

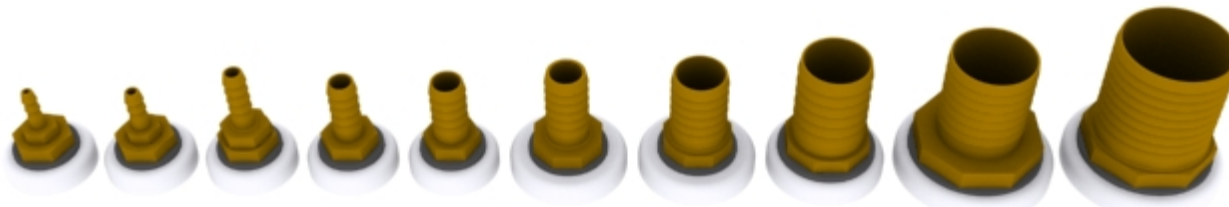
The Old Stables, West End Farm, Upper Froyle, Alton, Hampshire GU34 4JR. England
 Tel: +44 (0)1420 520830 fax: +44 (0)1420 520840 email: sales@tek-tanks.com
 www.tek-tanks.com

TEK TANKS
 Water Waste and Fuel

Tek-Tanks Standard Range of Tank Fittings

Straight Brass Hosetail Assemblies

For use with Fuel and Water Tanks. These fittings can be situated on any tank face, but in order to comply with ISO 10088 regulations, and our CE marking standard, they can only be fitted to the top tank face. Copper Dip-Pipes can be added for feed applications.



S06B S08B S10B S13B S16B S19B S25B S32B S38B S50B

Code	Size (metric)	Size (imperial)	Height	Application
S06B	06mm	1/4"	49mm	Fuel
S08B	08mm	5/16"	47mm	Fuel
S10B	10mm	3/8"	56mm	Fuel
S13B	13mm	1/2"	50mm	Fuel, Water
S16B	16mm	5/8"	51mm	Fuel, Water
S19B	19mm	3/4"	56mm	Fuel, Water
S25B	25mm	1"	60mm	Fuel, Water
S32B	32mm	1 1/4"	65mm	Fuel, Water
S38B	38mm	1 1/2"	70mm	Fuel, Water
S50B	50mm	2"	72mm	Fuel, Water

Fixed Elbow Brass Hosetail Assemblies

For use with Fuel and Water Tanks. These fittings can be situated on any tank face. If required, Plastic Dip-Pipes can be fitted for feed applications. Once fitted, these Elbow Hosetails cannot be rotated. Directions should be agreed with Tek-Tanks before fitting.



FE06B FE08B FE10B FE13B FE16B FE19B FE25B FE38B FE50B

Code	Size (metric)	Size (imperial)	Height	Application
FE06B	06mm	1/4"	40mm	Fuel
FE08B	08mm	5/16"	40mm	Fuel
FE10B	10mm	3/8"	40mm	Fuel
FE13B	13mm	1/2"	40mm	Fuel, Water
FE16B	16mm	5/8"	40mm	Fuel, Water
FE19B	19mm	3/4"	40mm	Fuel, Water
FE25B	25mm	1"	75mm	Fuel, Water
FE38B	38mm	1 1/2"	75mm	Fuel, Water
FE50B	50mm	2"	75mm	Fuel, Water

TEK TANKS

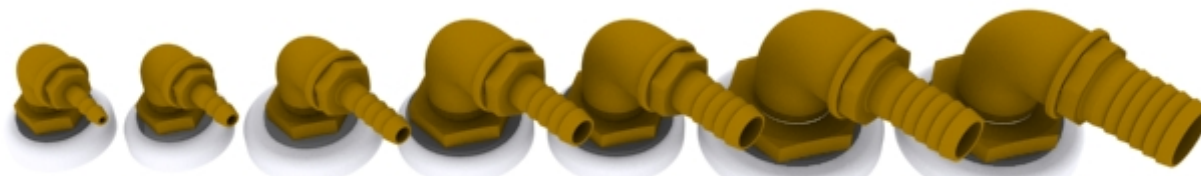
The Old Stables, West End Farm, Upper Froyle, Alton, Hampshire GU34 4JR. England
 Tel: +44 (0)1420 520830 fax: +44 (0)1420 520840 email: sales@tek-tanks.com
 www.tek-tanks.com

TEK TANKS
 Water Waste and Fuel

Tek-Tanks Standard Range of Tank Fittings

Elbow Brass Hosetail Assemblies

For use with Fuel and Water Tanks. These fittings can be situated on any tank face, but in order to comply with ISO 10088 regulations, and our CE marking standard, they can only be fitted to the top tank face. Copper Dip-Pipes can be added for feed applications.

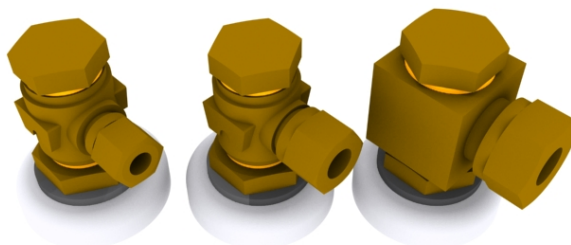


E06B E08B E10B E13B E16B E19B E25B

Code	Size (metric)	Size (imperial)	Height	Application
E06B	06mm	1/4"	49mm	Fuel
E08B	08mm	5/16"	47mm	Fuel
E10B	10mm	3/8"	56mm	Fuel
E13B	13mm	1/2"	50mm	Fuel, Water
E16B	16mm	5/8"	51mm	Fuel, Water
E19B	19mm	3/4"	56mm	Fuel, Water
E25B	25mm	1"	60mm	Fuel, Water

Banjo Brass Compression Assemblies

For use with Fuel Tanks, to pick up existing copper piping. These fittings can be situated on any tank face, but in order to comply with ISO 10088 regulations, and our CE marking standard, they can only be fitted to the top tank face. If required, Copper Dip-Pipes can be fitted for feed applications.



B06BCT B08BCT B10BCT

Code	Size (metric)	Size (imperial)	Height	Application
B06BCT	06mm	1/4"	45mm	Fuel
B08BCT	08mm	5/16"	51mm	Fuel
B10BCT	10mm	3/8"	55mm	Fuel

TEK TANKS

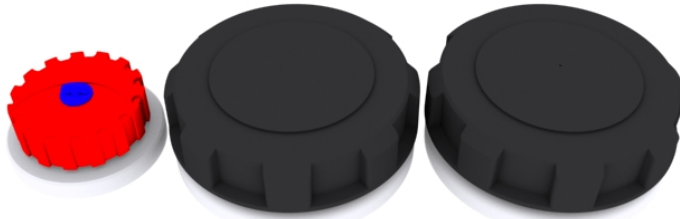
The Old Stables, West End Farm, Upper Froyle, Alton, Hampshire GU34 4JR. England
 Tel: +44 (0)1420 520830 fax: +44 (0)1420 520840 email: sales@tek-tanks.com
www.tek-tanks.com

TEK TANKS
 Water Waste and Fuel

Tek-Tanks Standard Range of Tank Fittings

Filler Caps

A range of Filler Caps for fuel applications, with integral vents (excluding 90MMCAP).



38MMCAP

90MMCAP

90MMCAPV

Code	Size (metric)	Size (imperial)	Height	Application
38MMCAP	38mm	1 1/2"	40mm	Fuel
90MMCAP	90mm	3 1/2"	48mm	Fuel
90MMCAPV	90mm	3 1/2"	48mm	Fuel

Blanking Caps

A range of Caps suitable for blanking our Male BSP Sockets. Useful for forward thinking where additional fittings may be required, for example; a Pump-Out fitting to be connected to a Deck Pump-Out.



C19P

C25P

C38P

C50P

Code	Size (metric)	Size (imperial)	Height	Application
C19P	19mm	3/4"	28mm	Water
C25P	25mm	1"	30mm	Water, Waste
C38P	38mm	1 1/2"	35mm	Water, Waste
C50P	50mm	2"	55mm	Water, Waste

Plugs

A range of plugs available for use with our BSP Female Sockets. Ideal for drain applications.



PLUG0

PLUG1

PLUG2

PLUG3

PLUG4

PLUG5

Code	Size (metric)	Size (imperial)	Height	Application
PLUG0	09mm	3/8"	30mm	Water, Fuel
PLUG1	13mm	1/2"	21mm	Water, Fuel
PLUG2	19mm	3/4"	21mm	Water, Fuel
PLUG3	25mm	1"	21mm	Water, Fuel
PLUG4	32mm	1 1/4"	23mm	Water, Fuel
PLUG5	38mm	1 1/2"	26mm	Water, Fuel

TEK TANKS

The Old Stables, West End Farm, Upper Froyle, Alton, Hampshire GU34 4JR. England
 Tel: +44 (0)1420 520830 fax: +44 (0)1420 520840 email: sales@tek-tanks.com
 www.tek-tanks.com

TEK TANKS
 Water Waste and Fuel

Tek-Tanks Standard Range of Tank Fittings

Hatches

An excellent range of Inspection Hatches suitable for Fuel, Water and Waste. Typically, all hatches should be fitted only on the top tank face, but Tek-Tanks own 200mm/270mm hatches can be fitted on any tank face.



200HATCHD

TCL4CLEAR

FLB

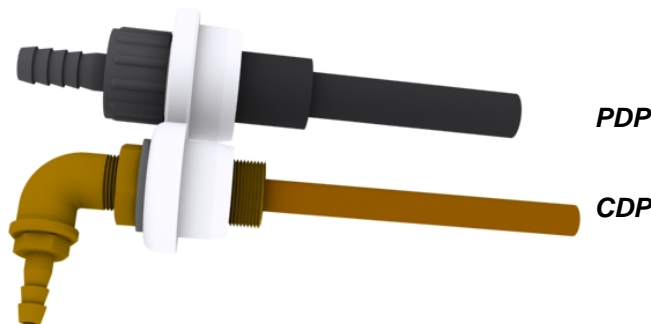
TCL4BLACK

200HATCHLP

Code	Size (metric)	Size (imperial)	Height	Application
200HATCHW	200mm	8"	25mm	Water, Waste
200HATCHD	200mm	8"	25mm	Fuel
270HATCHW	270mm	10"	25mm	Water, Waste
270HATCHD	270mm	10"	25mm	Fuel
200HATCHLP	200mm	8"	13mm	Fuel
TCL4CLEAR	235mm	9"	32mm	Water, Waste
TCL4BLACK	235mm	9"	32mm	Water, Waste
FLB	150mm	6"	25mm	Fuel, Water, Waste

Dip-Pipes

A range of Copper and Plastic Dip-Pipes for use with Fuel, Water and Waste applications. Typically, 16mm Plastic is recommended for Water Feed applications, 50mm Plastic for Waste applications, and 10mm Copper for Fuel applications. Other sizes are available on request.



Code	Size (metric)	Size (imperial)	Length	Application
PDP1-16	16mm	5/8"	0-300mm	Water
PDP2-16	16mm	5/8"	301-600mm	Water
PDP3-16	16mm	5/8"	601-900mm	Water
PDP4-16	16mm	5/8"	901-1200mm	Water
PDP1-50	50mm	2"	0-300mm	Waste
PDP2-50	50mm	2"	301-600mm	Waste
PDP3-50	50mm	2"	601-900mm	Waste
PDP4-50	50mm	2"	901-1200mm	Waste
CDP1-10	10mm	3/8"	0-300mm	Fuel
CDP2-10	10mm	3/8"	301-600mm	Fuel
CDP3-10	10mm	3/8"	601-900mm	Fuel
CDP4-10	10mm	3/8"	901-1200mm	Fuel

TEK TANKS

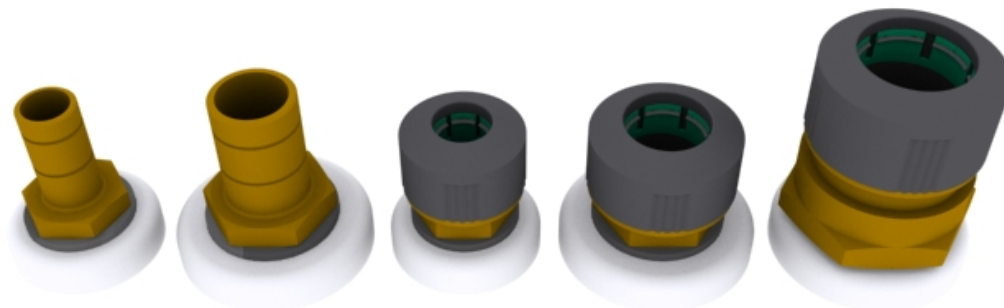
The Old Stables, West End Farm, Upper Froyle, Alton, Hampshire GU34 4JR. England
 Tel: +44 (0)1420 520830 fax: +44 (0)1420 520840 email: sales@tek-tanks.com
www.tek-tanks.com

TEKTANKS
 Water Waste and Fuel

Tek-Tanks Standard Range of Tank Fittings

Hep20 Push-Fit Fittings

A range of male and female push-fit fittings to suit 15mm, 22mm, and 28mm semi-rigid plastic hose for all water applications.

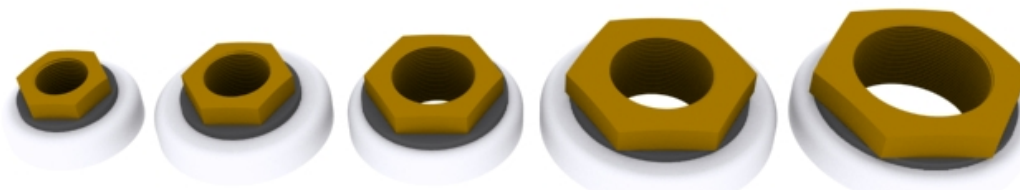


15mm MALE 22mm MALE 15mm FEMALE 22mm FEMALE 28mm FEMALE

Code	Size (metric)	Size (imperial)	Height	Application
HEP2015MMMALE	15mm	-	48mm	Water
HEP2022MMMALE	22mm	-	50mm	Water
HEP2015MMFEM	15mm	-	42mm	Water
HEP2022MMFEM	22mm	-	44mm	Water
HEP2028MMFEM	28mm	-	74mm	Water

Brass Reducing Bushes

A range of brass reducing bushes suitable for diesel applications, where customers wish to source their own fittings.



13-09BRB-D 19-13BRB-D 25-19BRB-D 32-25BRB-D 38-32BRB-D

Code	Size (metric)	Size (imperial)	Height	Application
13-09BRB-D	13-09mm	1/2" - 3/8"	18mm	Fuel
19-13BRB-D	19-13mm	3/4" - 1/2"	19mm	Fuel
25-19BRB-D	25-19mm	1" - 3/4"	19mm	Fuel
32-25BRB-D	32-25mm	1 1/4" - 1"	20mm	Fuel
38-32BRB-D	38-32mm	1 1/2" - 1 1/4"	21mm	Fuel

TEK TANKS

The Old Stables, West End Farm, Upper Froyle, Alton, Hampshire GU34 4JR. England
 Tel: +44 (0)1420 520830 fax: +44 (0)1420 520840 email: sales@tek-tanks.com
 www.tek-tanks.com

TEK TANKS
 Water Waste and Fuel

Tek-Tanks Standard Range of Tank Fittings

Female BSP Sockets

A range of high quality machined Female BSP Sockets, welded to our tanks. Sockets maybe be specified only for those who wish to fit their own fittings.



13MMFSOCKET 19MMFSOCKET 25MMFSOCKET 38MMFSOCKET 50MMFSOCKET

Code	Size (metric)	Size (imperial)	Height	Application
13MMFSOCKET	13mm	1/2"	10mm	Water, Fuel, Waste
19MMFSOCKET	19mm	3/4"	10mm	Water, Fuel, Waste
25MMFSOCKET	25mm	1"	10mm	Water, Fuel, Waste
38MMFSOCKET	38mm	1 1/2"	10mm	Water, Fuel, Waste
50MMFSOCKET	50mm	2"	10mm	Water, Fuel, Waste

Male BSP Sockets

A range of high quality machined Male BSP Sockets, welded to our tanks. Sockets maybe be specified only for those who wish to fit their own fittings.



19MMMFsocket 25MMMFsocket 38MMMFsocket 50MMMFsocket

Code	Size (metric)	Size (imperial)	Height	Application
19MMMFsocket	19mm	3/4"	24mm	Water, Fuel, Waste
25MMMFsocket	25mm	1"	24mm	Water, Fuel, Waste
38MMMFsocket	38mm	1 1/2"	24mm	Water, Fuel, Waste
50MMMFsocket	50mm	2"	24mm	Water, Fuel, Waste

TEK TANKS

The Old Stables, West End Farm, Upper Froyle, Alton, Hampshire GU34 4JR. England
 Tel: +44 (0)1420 520830 fax: +44 (0)1420 520840 email: sales@tek-tanks.com
www.tek-tanks.com

TEKTANKS
 Water Waste and Fuel