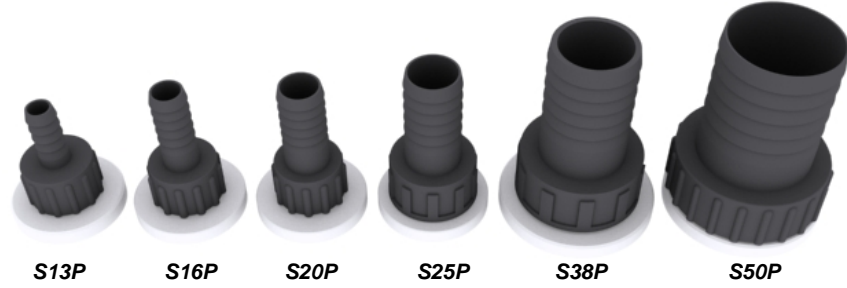


Standard Range of Tank Fittings

Over the next few pages, you'll see a comprehensive list of our standard tank fittings, that can be used with either our Custom Built or Standard Series A Tanks. Should you find that there is something you require which isn't listed, please get in touch and we will be happy to quote this for you.

Straight Plastic Hosetail Assemblies

For use with Water, Waste and Grey Water Tanks. These fittings can be situated on any tank face. If required, Plastic Dip-Pipes can be fitted for feed applications.



Code	Size (metric)	Size (imperial)	Height	Application
S13P	13mm	1/2"	64mm	Water, Grey Water
S16P	16mm	5/8"	64mm	Water, Grey Water
S20P	20mm	3/4"	68mm	Water, Grey Water
S25P	25mm	1"	74mm	Water, Grey Water, Waste
S38P	38mm	1 1/2"	92mm	Water, Grey Water, Waste
S50P	50mm	2"	100mm	Water, Grey Water, Waste

Elbow Plastic Hosetail Assemblies

For use with Water, Waste and Grey Water Tanks. These fittings can be situated on any tank face. If required, Plastic Dip-Pipes can be fitted for feed applications.



Code	Size (metric)	Size (imperial)	Height	Application
E13P	13mm	1/2"	60mm	Water, Grey Water
E16P	16mm	5/8"	62mm	Water, Grey Water
E20P	20mm	3/4"	70mm	Water, Grey Water
E25P	25mm	1"	74mm	Water, Grey Water, Waste
E38P	38mm	1 1/2"	108mm	Water, Grey Water, Waste
E38PR	38mm	1 1/2"	85mm	Water, Grey Water, Waste
E50P	50mm	2"	110mm	Water, Grey Water, Waste

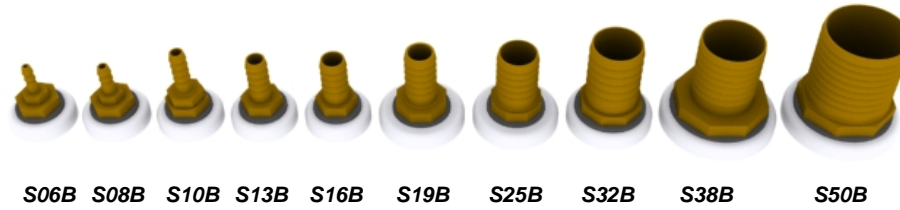
TEK TANKS

The Old Stables, West End Farm, Upper Froyle, Alton, Hampshire GU34 4JR, England
 Tel: +44 (0)1420 525478 fax: +44 (0)1420 520840 email: sales@tek-tanks.com
 www.tek-tanks.com

Standard Range of Tank Fittings

Straight Brass Hosetail Assemblies

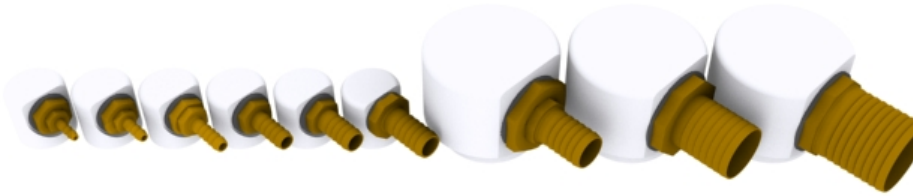
For use with Fuel and Water Tanks. These fittings can be situated on any tank face, but in order to comply with ISO 10088 regulations, and our CE marking standard, they can only be fitted to the top tank face. Copper Dip-Pipes can be added for feed applications.



Code	Size (metric)	Size (imperial)	Height	Application
S06B	06mm	1/4"	49mm	Fuel
S08B	08mm	5/16"	47mm	Fuel
S10B	10mm	3/8"	56mm	Fuel
S13B	13mm	1/2"	50mm	Fuel, Water
S16B	16mm	5/8"	51mm	Fuel, Water
S19B	19mm	3/4"	56mm	Fuel, Water
S25B	25mm	1"	60mm	Fuel, Water
S32B	32mm	1 1/4"	65mm	Fuel, Water
S38B	38mm	1 1/2"	70mm	Fuel, Water
S50B	50mm	2"	72mm	Fuel, Water

Fixed Elbow Brass Hosetail Assemblies

For use with Fuel and Water Tanks. These fittings can be situated on any tank face. If required, Plastic Dip-Pipes can be fitted for feed applications. Once fitted, these Elbow Hosetails cannot be rotated. Directions should be agreed with Tek-Tanks before fitting.



Code	Size (metric)	Size (imperial)	Height	Application
FE06B	06mm	1/4"	40mm	Fuel
FE08B	08mm	5/16"	40mm	Fuel
FE10B	10mm	3/8"	40mm	Fuel
FE13B	13mm	1/2"	40mm	Fuel, Water
FE16B	16mm	5/8"	40mm	Fuel, Water
FE19B	19mm	3/4"	40mm	Fuel, Water
FE25B	25mm	1"	75mm	Fuel, Water
FE38B	38mm	1 1/2"	75mm	Fuel, Water
FE50B	50mm	2"	75mm	Fuel, Water

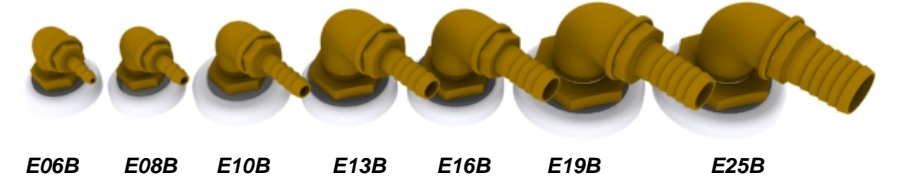
TEK TANKS

The Old Stables, West End Farm, Upper Froyle, Alton, Hampshire GU34 4JR, England
 Tel: +44 (0)1420 525478 fax: +44 (0)1420 520840 email: sales@tek-tanks.com
 www.tek-tanks.com

Standard Range of Tank Fittings

Elbow Brass Hosetail Assemblies

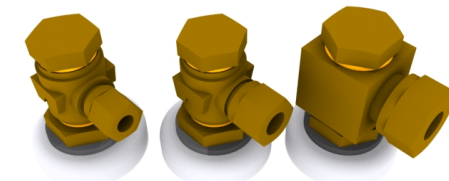
For use with Fuel and Water Tanks. These fittings can be situated on any tank face, but in order to comply with ISO 10088 regulations, and our CE marking standard, they can only be fitted to the top tank face. Copper Dip-Pipes can be added for feed applications.



Code	Size (metric)	Size (imperial)	Height	Application
E06B	06mm	1/4"	49mm	Fuel
E08B	08mm	5/16"	47mm	Fuel
E10B	10mm	3/8"	56mm	Fuel
E13B	13mm	1/2"	50mm	Fuel, Water
E16B	16mm	5/8"	51mm	Fuel, Water
E19B	19mm	3/4"	56mm	Fuel, Water
E25B	25mm	1"	60mm	Fuel, Water

Banjo Brass Compression Assemblies

For use with Fuel and Water Tanks, to pick up existing copper piping. These fittings can be situated on any tank face, but in order to comply with ISO 10088 regulations, and our CE marking standard, they can only be fitted to the top tank face. If required, Copper Dip-Pipes can be fitted for feed applications.



Code	Size (metric)	Size (imperial)	Height	Application
B06BCT	06mm	1/4"	45mm	Fuel
B08BCT	08mm	5/16"	51mm	Fuel
B10BCT	10mm	3/8"	55mm	Fuel

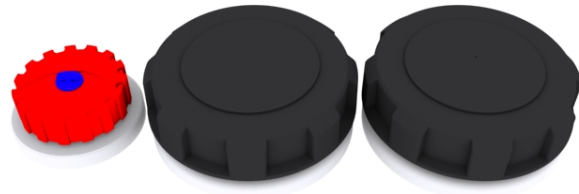
TEK TANKS

The Old Stables, West End Farm, Upper Froyle, Alton, Hampshire GU34 4JR, England
 Tel: +44 (0)1420 525478 fax: +44 (0)1420 520840 email: sales@tek-tanks.com
 www.tek-tanks.com

Standard Range of Tank Fittings

Filler Caps

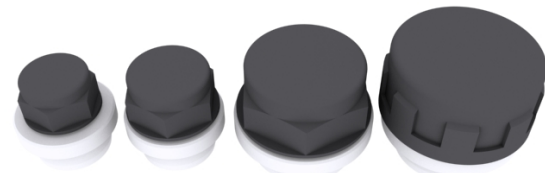
A range of Filler Caps for fuel applications, with integral vents (excluding 90MMCAP).



	38MMCAP	90MMCAP	90MMCAPV	
Code				Application
	Size (metric)	Size (imperial)	Height	
38MMCAP	38mm	1 1/2"	40mm	Fuel
90MMCAP	90mm	3 1/2"	48mm	Fuel
90MMCAPV	90mm	3 1/2"	48mm	Fuel

Blanking Caps

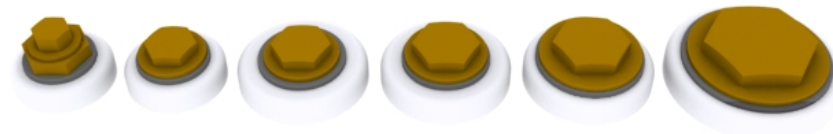
A range of Caps suitable for blanking our Male BSP Sockets. Useful for forward thinking where additional fittings may be required, for example: a Pump-Out fitting to be connected to a Deck Pump-Out.



	C19P	C25P	C38P	C50P	
Code					Application
	Size (metric)	Size (imperial)	Height		
C19P	19mm	3/4"	28mm	Water	
C25P	25mm	1"	30mm	Water, Waste	
C38P	38mm	1 1/2"	35mm	Water, Waste	
C50P	50mm	2"	55mm	Water, Waste	

Plugs

A range of plugs available for use with our BSP Female Sockets. Ideal for drain applications.



	PLUG0	PLUG1	PLUG2	PLUG3	PLUG4	PLUG5	
Code							Application
	Size (metric)	Size (imperial)	Height				
PLUG0	09mm	3/8"	30mm	Water, Fuel			
PLUG1	13mm	1/2"	21mm	Water, Fuel			
PLUG2	19mm	3/4"	21mm	Water, Fuel			
PLUG3	25mm	1"	21mm	Water, Fuel, Waste			
PLUG4	32mm	1 1/4"	23mm	Water, Fuel, Waste			
PLUG5	38mm	1 1/2"	26mm	Water, Fuel, Waste			

Standard Range of Tank Fittings

Hatches

An excellent range of Inspection Hatches suitable for Fuel, Water and Waste. Typically, all hatches should be fitted only on the top tank face, but Tek-Tanks own 200mm/270mm hatches can be fitted on any tank face.



	200HATCHD	TCL4CLEAR	FLB	TCL4BLACK	200HATCHLP	
Code						Application
	Size (metric)	Size (imperial)	Height			
200HATCHW	200mm	8"	25mm	Water, Waste		
200HATCHD	200mm	8"	25mm	Diesel		
270HATCHW	270mm	10"	25mm	Water, Waste		
270HATCHD	270mm	10"	25mm	Fuel		
200HATCHLP	200mm	8"	13mm	Fuel		
TCL4CLEAR	235mm	9"	32mm	Water, Waste		
TCL4BLACK	235mm	9"	32mm	Water, Waste		
FLB	150mm	6"	25mm	Fuel, Water, Waste		

Dip-Pipes

A range of Copper and Plastic Dip-Pipes for use with Fuel, Water and Waste applications. Typically, 16mm Plastic is recommended for Water Feed applications, 50mm Plastic for Waste applications, and 10mm Copper for Fuel applications. Other sizes are available on request.

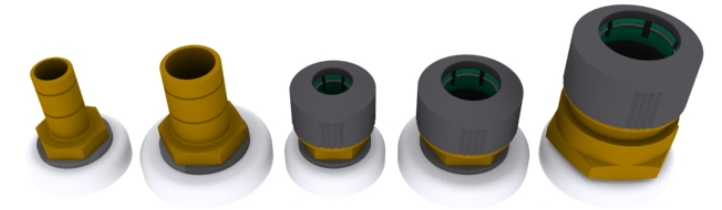


	PDP	CDP				
Code			Size (metric)	Size (imperial)	Length	Application
PDP1-16	16mm	5/8"	0-300mm	Water		
PDP2-16	16mm	5/8"	301-600mm	Water		
PDP3-16	16mm	5/8"	601-900mm	Water		
PDP4-16	16mm	5/8"	901-1200mm	Water		
PDP1-50	50mm	2"	0-300mm	Waste		
PDP2-50	50mm	2"	301-600mm	Waste		
PDP3-50	50mm	2"	601-900mm	Waste		
PDP4-50	50mm	2"	901-1200mm	Waste		
CDP1-10	10mm	3/8"	0-300mm	Fuel		
CDP2-10	10mm	3/8"	301-600mm	Fuel		
CDP3-10	10mm	3/8"	601-900mm	Fuel		
CDP4-10	10mm	3/8"	901-1200mm	Fuel		

Standard Range of Tank Fittings

Hep20 Push-Fit Fittings

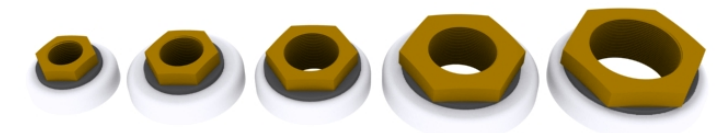
A range of male and female push-fit fittings to suit 15mm, 22mm, and 28mm semi-rigid plastic hose for all water applications.



	15mm MALE	22mm MALE	15mm FEMALE	22mm FEMALE	28mm FEMALE	
Code						Application
	Size (metric)	Size (imperial)	Height			
HEP2015MMMALE	15mm	-	48mm	Water		
HEP2022MMMALE	22mm	-	50mm	Water		
HEP2015MMFEM	15mm	-	42mm	Water		
HEP2022MMFEM	22mm	-	44mm	Water		
HEP2028MMFEM	28mm	-	74mm	Water		

Brass Reducing Bushes

A range of brass reducing bushes suitable for diesel applications, where customers wish to source their own fittings.



	13-09BRB-D	19-13BRB-D	25-19BRB-D	32-25BRB-D	38-32BRB-D	
Code						Application
	Size (metric)	Size (imperial)	Height			
13-09BRB-D	13 - 09mm	1/2" - 3/8"	18mm	Fuel		
19-13BRB-D	19 - 13mm	3/4" - 1/2"	19mm	Fuel		
25-19BRB-D	25 - 19mm	1" - 3/4"	19mm	Fuel		
32-25BRB-D	32 - 25mm	1 1/4" - 1"	20mm	Fuel		
38-32BRB-D	38 - 32mm	1 1/2" - 1 1/4"	21mm	Fuel		